

**Part 8900**  
(part 17.761 ha)  
TOTAL 24.738 Ha

SURVEYING AND SPATIAL INFORMATION REGULATION 2017						
MARK	MGA CO-ORDINATES		CLASS	ORDER	STATUS	ORIGIN
	EASTINGS	NORTHINGS				
PM 147932	530 364.634	6 109 732.100	A	1	FD	SCIMS 13 DEC 2017
PM 86658	529 825.482	6 110 473.607	A	1	FD	
SS 103026	530 461.706	6 110 249.798	C	3	FD	
SS 160483	530 459.479	6 110 107.955	C	3	FD	
SS 160486	530 370.427	6 110 106.681	C	3	FD	
SS 196113	530 365	6 109 945	U	U	FD	
METHOD						
SSM194331	530 032.8	6 109 965.4	U	U	CADASTRAL TRAVERSE	PLACED IN THIS PLAN
SSM194332	530 127.7	6 110 085.8	U	U		
SSM194333	530 270.1	6 110 136.0	U	U		
SSM194334	530 279.6	6 110 004.7	U	U		
SSM194335	530 182.5	6 109 989.2	U	U		
SSM194336	530 286.4	6 109 929.5	U	U		
SSM194337	530 182.6	6 109 917.5	U	U		
SOURCE : SCIMS 13th DEC 2017						
COMBINED SCALE FACTOR OF 0.999573 ZONE 55						

Surveyor <b>GLENDYN PAUL GROVES</b>	<b>PLAN OF SUBDIVISION OF LOT 700 DP1242827 AND LOT 42 DP 1183886</b>	LGA <b>WAGGA WAGGA</b>	Registered
Date Of Survey <b>19th FEB, 2020</b>		Locality: <b>LLOYD</b>	
Surveyor's Reference <b>17317</b>		Subdivision No.	
		Lengths are in metres. Reduction Ratio 1: 3000	

X1 - EASEMENT FOR MULTI-PURPOSE ELECTRICAL INSTALLATION 4.2 WIDE, BY DP1242827  
 X2 - EASEMENT TO DRAIN SEWAGE & WATER 2.5 WIDE, BY DP1242827  
 X3 - EASEMENT TO DRAIN SEWAGE 2 WIDE, BY DP1242827

SMT = SURVEY MARK TOKEN IN CONCRETE  
 AT CORNER

PART 8900

SEE SHEET 1

M.G.A. ZONE 55  
SCIMS

RM DH&W  
 219°57'-16.835  
 250°37'-24.48

RMDH & W FD  
 261°59'-6.45  
 284°12'-18.47  
 (DP1242827)

SSM207454  
 RM.SSM207454  
 130°09'-8.22

Surveyor **GLENDYN PAUL GROVES**

Date Of Survey **19th FEB, 2020**

Surveyor's Reference **17317**

PLAN OF SUBDIVISION OF LOT 700  
 DP1242827 AND LOT 42 DP 1183886

LGA **WAGGA WAGGA**

Locality: **LLOYD**

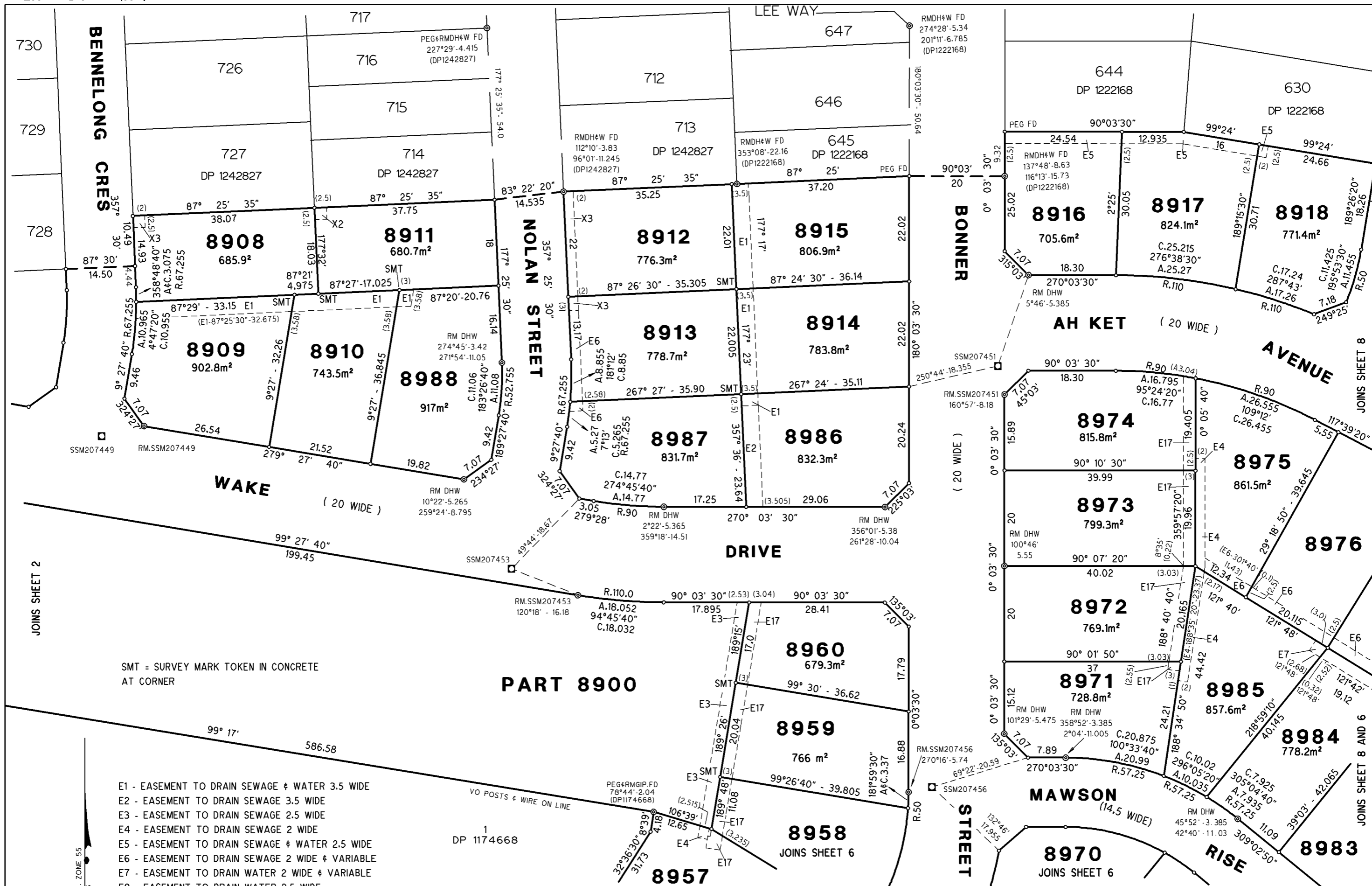
Subdivision No.

Lengths are in metres. Reduction Ratio 1: **500**

Registered

0	10	20	30	40	50	60	70	80	90	100	110	120	130	140
---	----	----	----	----	----	----	----	----	----	-----	-----	-----	-----	-----

Table of mm



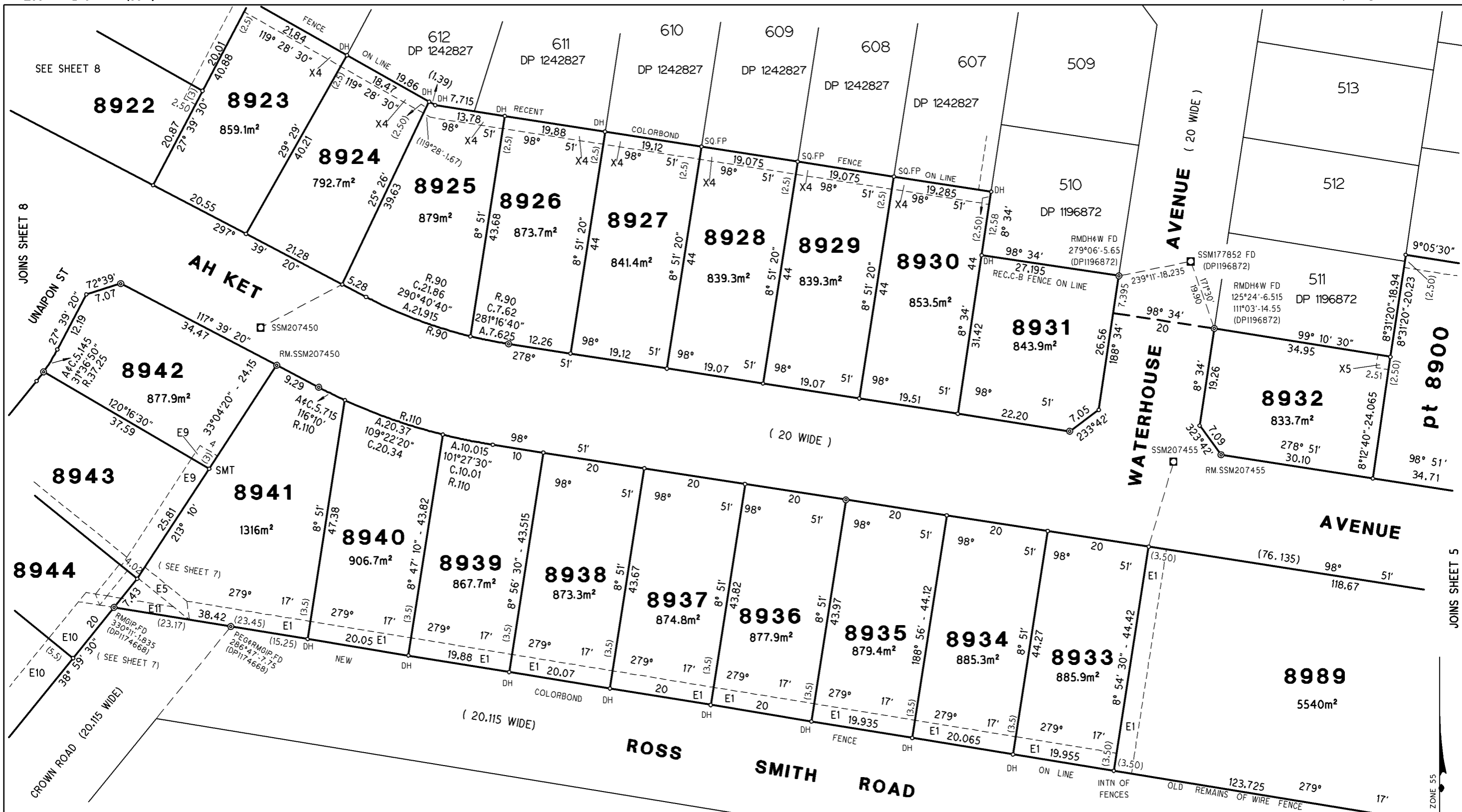
SMT = SURVEY MARK TOKEN IN CONCRETE AT CORNER

**PART 8900**

- E1 - EASEMENT TO DRAIN SEWAGE & WATER 3.5 WIDE
- E2 - EASEMENT TO DRAIN SEWAGE 3.5 WIDE
- E3 - EASEMENT TO DRAIN SEWAGE 2.5 WIDE
- E4 - EASEMENT TO DRAIN SEWAGE 2 WIDE
- E5 - EASEMENT TO DRAIN SEWAGE & WATER 2.5 WIDE
- E6 - EASEMENT TO DRAIN SEWAGE 2 WIDE & VARIABLE
- E7 - EASEMENT TO DRAIN WATER 2 WIDE & VARIABLE
- E8 - EASEMENT TO DRAIN WATER 2.5 WIDE
- E17 - EASEMENT TO DRAIN WATER 3 WIDE

- X2 - EASEMENT TO DRAIN SEWAGE & WATER 2.5 WIDE, BY DP1242827
- X3 - EASEMENT TO DRAIN SEWAGE 2 WIDE, BY DP1242827

Surveyor <b>GLENDYN PAUL GROVES</b>	PLAN OF SUBDIVISION OF LOT 700 DP1242827 AND LOT 42 DP 1183886	LGA WAGGA WAGGA	Registered
Date Of Survey <b>19th FEB, 2020</b>		Locality LLOYD	
Surveyor's Reference 17317		Subdivision No.	
		Lengths are in metres. Reduction Ratio 1	500



SMT = SURVEY MARK TOKEN IN CONCRETE AT CORNER

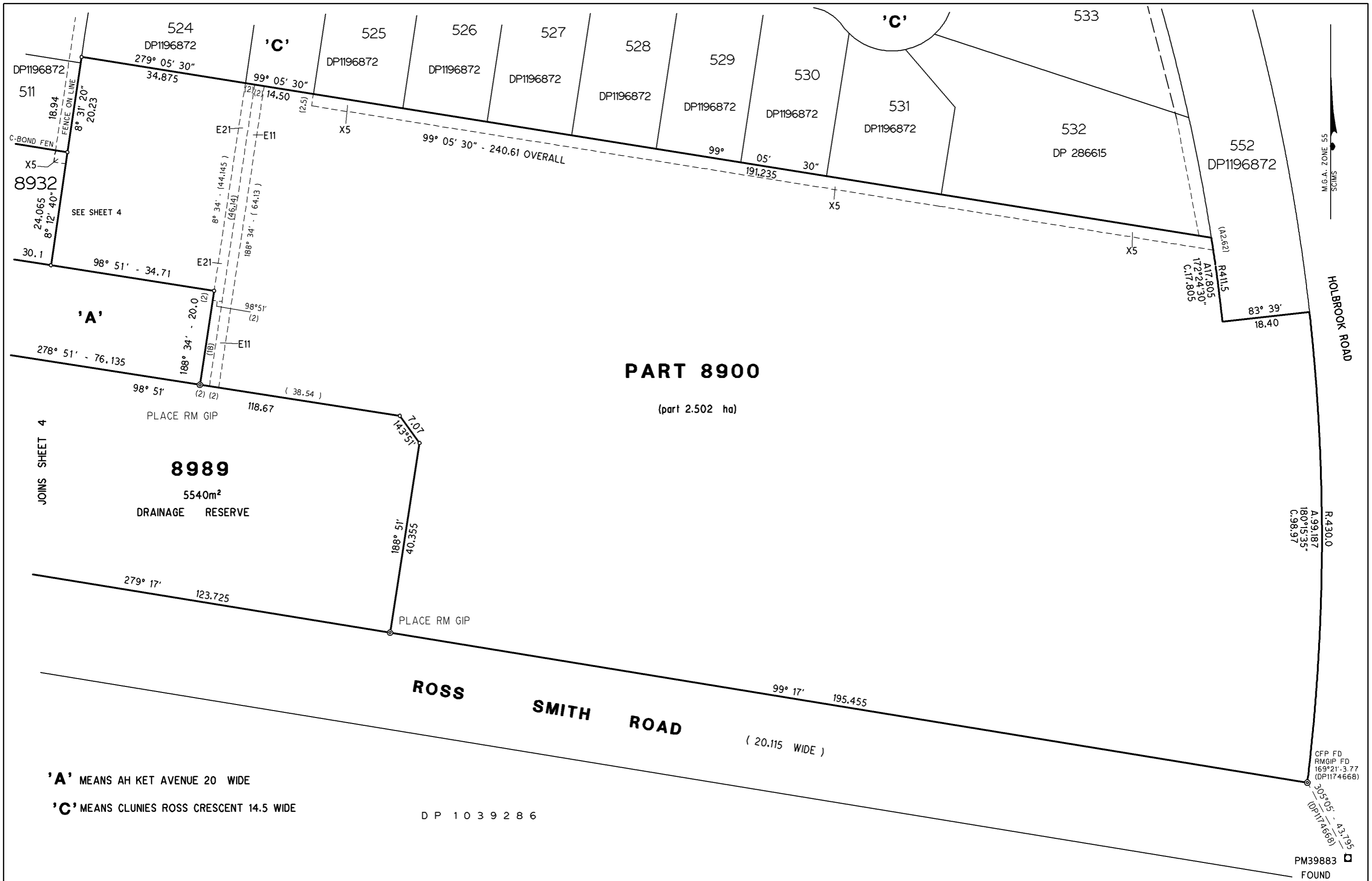
E1 - EASEMENT TO DRAIN SEWAGE & WATER 3.5 WIDE  
 E5 - EASEMENT TO DRAIN SEWAGE & WATER 2.5 WIDE  
 E9 - EASEMENT TO DRAIN SEWAGE & WATER 4 WIDE  
 E11 - EASEMENT TO DRAIN WATER 2 WIDE

DH means DRILL HOLE IN TOP OF FENCE RAIL AT CORNER

X4 - EASEMENT TO DRAIN SEWAGE & WATER 2.5 WIDE, BY DP1222168  
 X5 - EASEMENT TO DRAIN WATER & SEWAGE 2.5 WIDE, BY DP1196872

Surveyor Date Of Survey Surveyor's Reference	<b>GLENDYN PAUL GROVES</b> 19th FEB, 2020 17317	<b>PLAN OF SUBDIVISION OF LOT 700 DP1242827 AND LOT 42 DP 1183886</b>	LGA Locality: Subdivision No.	<b>WAGGA WAGGA</b> LLOYD 500	Registered
--	---	---	-------------------------------------	------------------------------------	------------

0	10	20	30	40	50	60	70	80	90	100	110	120	130	140
---	----	----	----	----	----	----	----	----	----	-----	-----	-----	-----	-----



**PART 8900**

(part 2.502 ha)

**8989**

5540m<sup>2</sup>  
DRAINAGE RESERVE

**ROSS SMITH ROAD**  
( 20.115 WIDE )

'A' MEANS AH KET AVENUE 20 WIDE  
'C' MEANS CLUNIES ROSS CRESCENT 14.5 WIDE

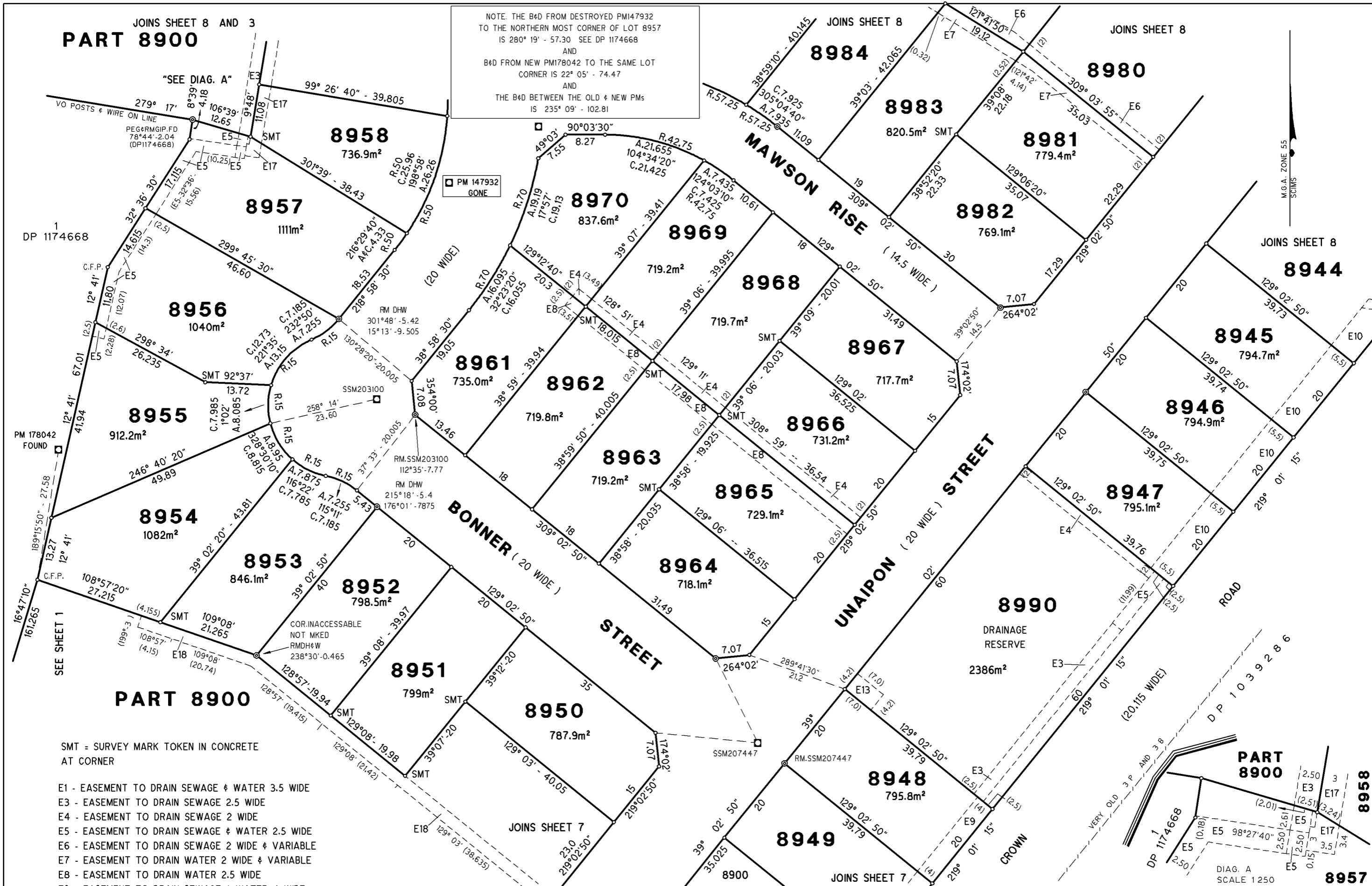
D P 1 0 3 9 2 8 6

E11 EASEMENT TO DRAIN WATER 2 WIDE  
E21 EASEMENT FOR UNDERGROUND POWERLINES 2 WIDE  
X5 - EASEMENT TO DRAIN WATER & SEWAGE 2.5 WIDE, BY DP1196872

Surveyor <b>GLENDYN PAUL GROVES</b>	PLAN OF SUBDIVISION OF LOT 700 DP1242827 AND LOT 42 DP 1183886	LGA WAGGA WAGGA	Registered
Date Of Survey <b>19th FEB, 2020</b>		Locality LLOYD	
Surveyor's Reference 17317		Subdivision No.	
		Lengths are in metres. Reduction Ratio 1: 500	

0	10	20	30	40	50	60	70	80	90	100	110	120	130	140
---	----	----	----	----	----	----	----	----	----	-----	-----	-----	-----	-----

Table of mm



JOINS SHEET 8 AND 3  
**PART 8900**

NOTE: THE B&D FROM DESTROYED PM147932 TO THE NORTHERN MOST CORNER OF LOT 8957 IS 280° 19' - 57.30 SEE DP 1174668 AND B&D FROM NEW PM178042 TO THE SAME LOT CORNER IS 22° 05' - 74.47 AND THE B&D BETWEEN THE OLD & NEW PMs IS 235° 09' - 102.81

PM 147932 GONE

SEE DIAG. A"

VO POSTS & WIRE ON LINE  
PEG&RMGIP.FD  
78°44'-2.04  
(DP1174668)

1  
DP 1174668

C.F.P.

PM 178042 FOUND

SEE SHEET 1

COR. INACCESSIBLE NOT MKED RMDH&W 238°30'-0.465

**PART 8900**

SMT - SURVEY MARK TOKEN IN CONCRETE AT CORNER

E1 - EASEMENT TO DRAIN SEWAGE & WATER 3.5 WIDE  
E3 - EASEMENT TO DRAIN SEWAGE 2.5 WIDE  
E4 - EASEMENT TO DRAIN SEWAGE 2 WIDE  
E5 - EASEMENT TO DRAIN SEWAGE & WATER 2.5 WIDE  
E6 - EASEMENT TO DRAIN SEWAGE 2 WIDE & VARIABLE  
E7 - EASEMENT TO DRAIN WATER 2 WIDE & VARIABLE  
E8 - EASEMENT TO DRAIN WATER 2.5 WIDE  
E9 - EASEMENT TO DRAIN SEWAGE & WATER 4 WIDE  
E10 - EASEMENT TO DRAIN SEWAGE & WATER 5.5 WIDE  
E12 - EASEMENT TO DRAIN SEWAGE & WATER 6 WIDE  
E13 - EASEMENT FOR MULTI-PURPOSE ELECTRICAL INSTALLATION 4.2 WIDE  
E18 - EASEMENT TO DRAIN SEWAGE & WATER 3 WIDE

JOINS SHEET 7

DP 1039286

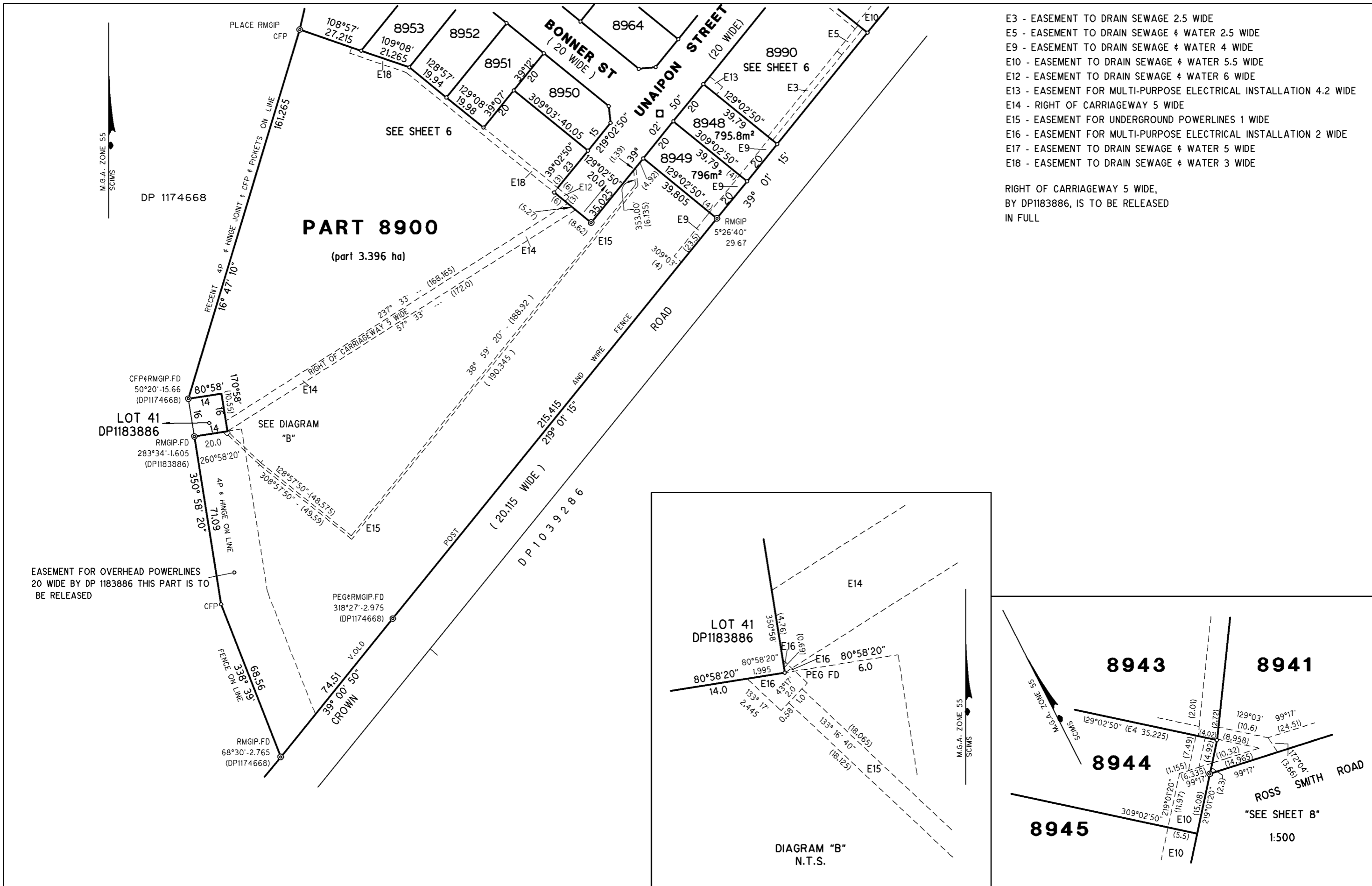
VERY OLD 3 P AND 3 B

DIAG. A SCALE 1250

8958 736.9m²  
8957 1111m²  
8956 1040m²  
8955 912.2m²  
8954 1082m²  
8953 846.1m²  
8952 798.5m²  
8951 799m²  
8950 787.9m²  
8949 795.8m²  
8948 795.8m²  
8947 795.1m²  
8946 794.9m²  
8945 794.7m²  
8944 794.7m²  
8943 794.7m²  
8942 794.7m²  
8941 794.7m²  
8940 794.7m²  
8939 794.7m²  
8938 794.7m²  
8937 794.7m²  
8936 794.7m²  
8935 794.7m²  
8934 794.7m²  
8933 794.7m²  
8932 794.7m²  
8931 794.7m²  
8930 794.7m²  
8929 794.7m²  
8928 794.7m²  
8927 794.7m²  
8926 794.7m²  
8925 794.7m²  
8924 794.7m²  
8923 794.7m²  
8922 794.7m²  
8921 794.7m²  
8920 794.7m²  
8919 794.7m²  
8918 794.7m²  
8917 794.7m²  
8916 794.7m²  
8915 794.7m²  
8914 794.7m²  
8913 794.7m²  
8912 794.7m²  
8911 794.7m²  
8910 794.7m²  
8909 794.7m²  
8908 794.7m²  
8907 794.7m²  
8906 794.7m²  
8905 794.7m²  
8904 794.7m²  
8903 794.7m²  
8902 794.7m²  
8901 794.7m²  
8900 794.7m²

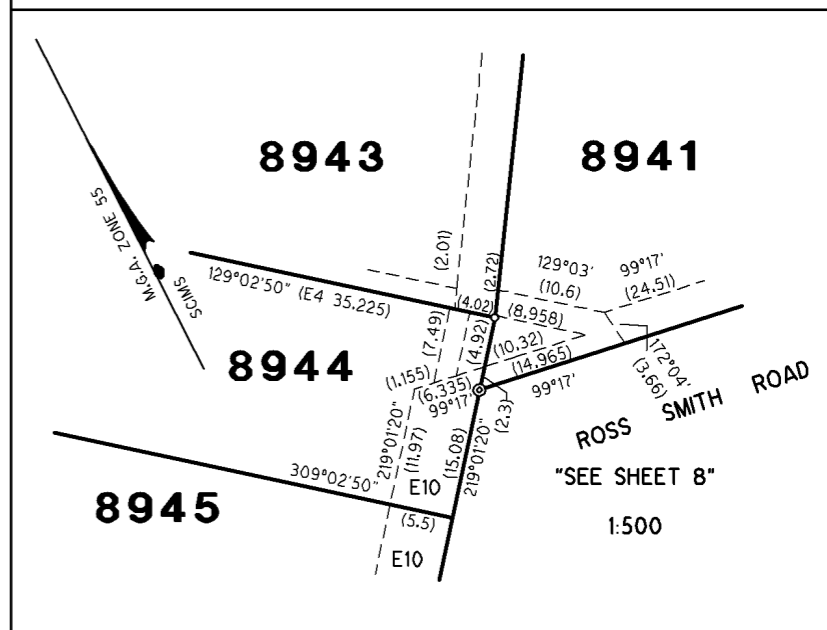
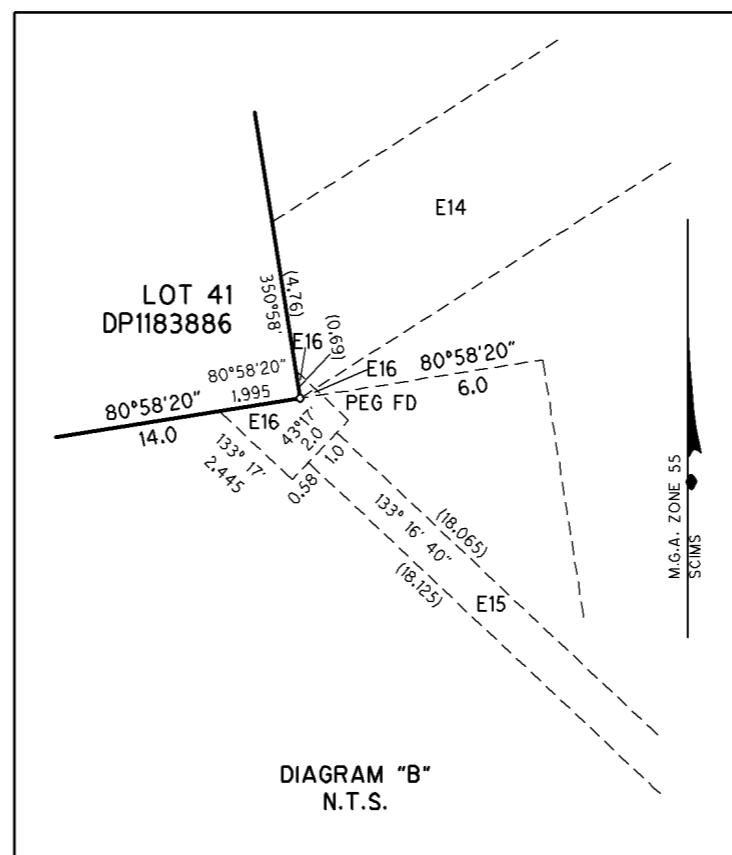
0 10 20 30 40 50 60 70 80 90 100 110 120 130 140 Table of mm

Surveyor Date Of Survey Surveyor's Reference	GLENDYN PAUL GROVES 19th FEB, 2020 17317	PLAN OF SUBDIVISION OF LOT 700 DP1242827 AND LOT 42 DP 1183886	LGA Locality: Subdivision No.	WAGGA WAGGA LLOYD 500	Registered	Lengths are in metres. Reduction Ratio 1
--	--	---	-------------------------------------	-----------------------------	------------	--



- E3 - EASEMENT TO DRAIN SEWAGE 2.5 WIDE
- E5 - EASEMENT TO DRAIN SEWAGE & WATER 2.5 WIDE
- E9 - EASEMENT TO DRAIN SEWAGE & WATER 4 WIDE
- E10 - EASEMENT TO DRAIN SEWAGE & WATER 5.5 WIDE
- E12 - EASEMENT TO DRAIN SEWAGE & WATER 6 WIDE
- E13 - EASEMENT FOR MULTI-PURPOSE ELECTRICAL INSTALLATION 4.2 WIDE
- E14 - RIGHT OF CARRIAGEWAY 5 WIDE
- E15 - EASEMENT FOR UNDERGROUND POWERLINES 1 WIDE
- E16 - EASEMENT FOR MULTI-PURPOSE ELECTRICAL INSTALLATION 2 WIDE
- E17 - EASEMENT TO DRAIN SEWAGE & WATER 5 WIDE
- E18 - EASEMENT TO DRAIN SEWAGE & WATER 3 WIDE

RIGHT OF CARRIAGEWAY 5 WIDE,  
BY DP1183886, IS TO BE RELEASED  
IN FULL



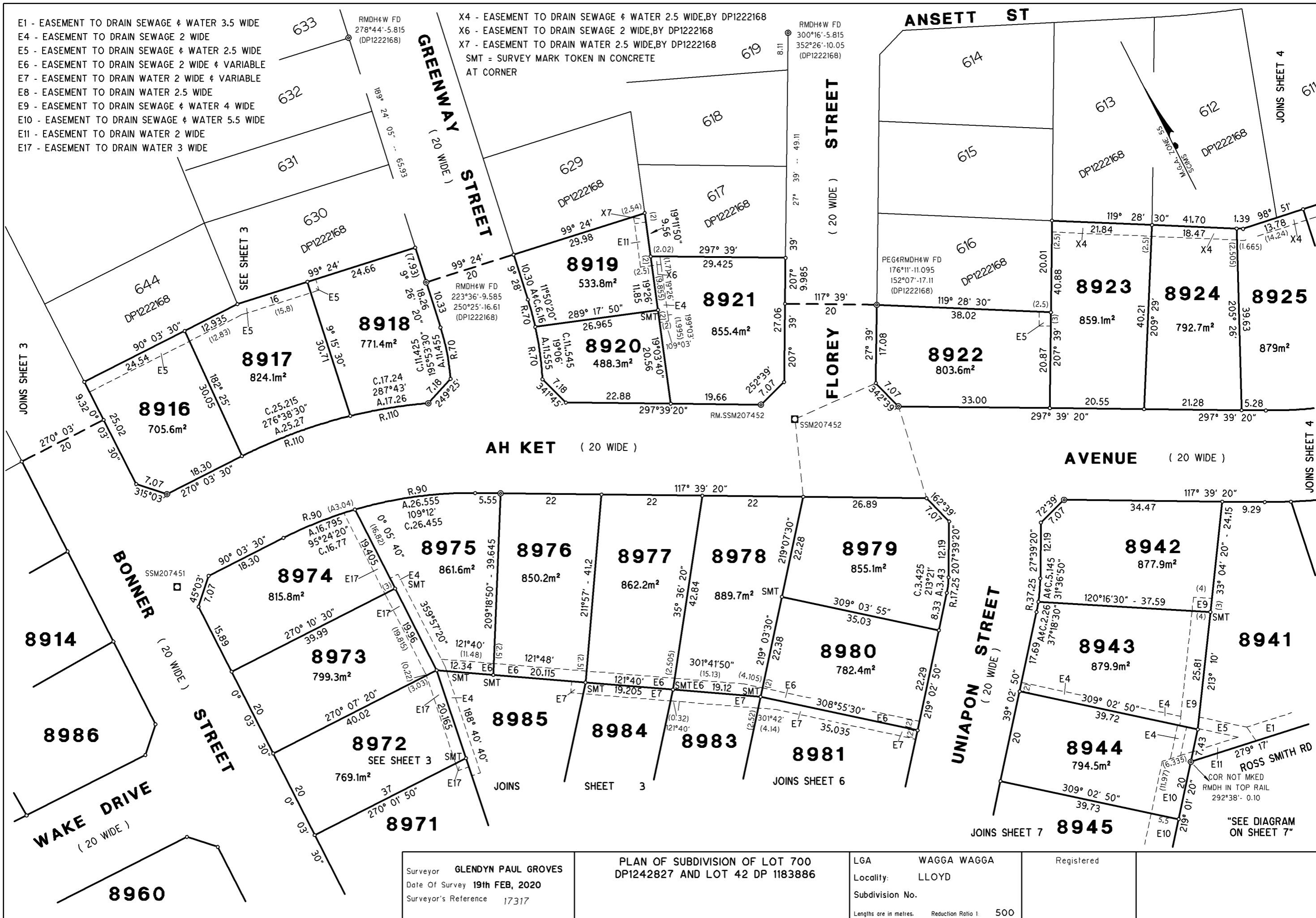
Surveyor <b>GLENDYN PAUL GROVES</b> Date Of Survey <b>19th FEB, 2020</b> Surveyor's Reference <b>17317</b>	<b>PLAN OF SUBDIVISION OF LOT 700 DP1242827 AND LOT 42 DP 1183886</b>	LGA <b>WAGGA WAGGA</b> Locality: <b>LLOYD</b> Subdivision No. Lengths are in metres. Reduction Ratio 1:1000	Registered
--	---	--	------------

0	10	20	30	40	50	60	70	80	90	100	110	120	130	140
---	----	----	----	----	----	----	----	----	----	-----	-----	-----	-----	-----

Table of mm

- E1 - EASEMENT TO DRAIN SEWAGE & WATER 3.5 WIDE
- E4 - EASEMENT TO DRAIN SEWAGE 2 WIDE
- E5 - EASEMENT TO DRAIN SEWAGE & WATER 2.5 WIDE
- E6 - EASEMENT TO DRAIN SEWAGE 2 WIDE & VARIABLE
- E7 - EASEMENT TO DRAIN WATER 2 WIDE & VARIABLE
- E8 - EASEMENT TO DRAIN WATER 2.5 WIDE
- E9 - EASEMENT TO DRAIN SEWAGE & WATER 4 WIDE
- E10 - EASEMENT TO DRAIN SEWAGE & WATER 5.5 WIDE
- E11 - EASEMENT TO DRAIN WATER 2 WIDE
- E17 - EASEMENT TO DRAIN WATER 3 WIDE

- X4 - EASEMENT TO DRAIN SEWAGE & WATER 2.5 WIDE, BY DP1222168
- X6 - EASEMENT TO DRAIN SEWAGE 2 WIDE, BY DP1222168
- X7 - EASEMENT TO DRAIN WATER 2.5 WIDE, BY DP1222168
- SMT = SURVEY MARK TOKEN IN CONCRETE AT CORNER

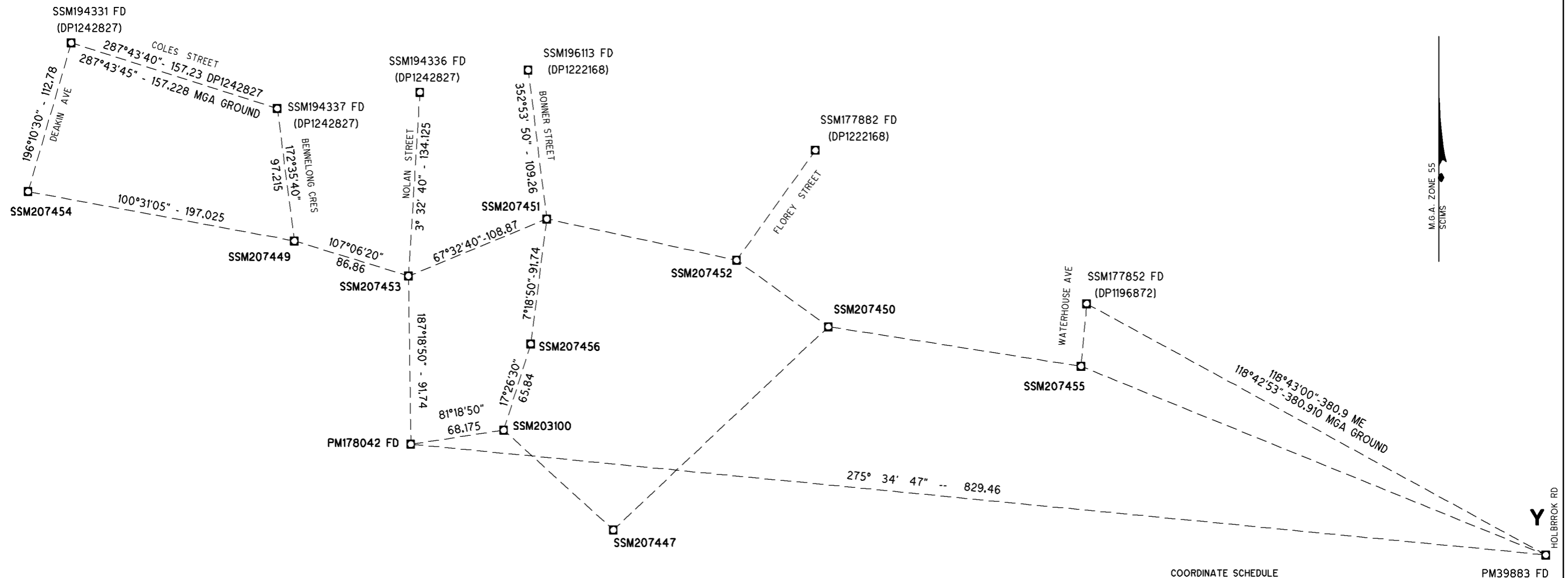


Surveyor GLENDYN PAUL GROVES	PLAN OF SUBDIVISION OF LOT 700 DP1242827 AND LOT 42 DP 1183886	LGA WAGGA WAGGA	Registered
Date Of Survey 19th FEB, 2020		Locality: LLOYD	
Surveyor's Reference 17317		Subdivision No.	
		Lengths are in metres. Reduction Ratio 1	500

0	10	20	30	40	50	60	70	80	90	100	110	120	130	140
---	----	----	----	----	----	----	----	----	----	-----	-----	-----	-----	-----

Table of mm





COORDINATE SCHEDULE

MARK	MGA CO-ORDINATES		CLASS	ORDER	METHOD	STATE
	EASTINGS	NORTHINGS				
SSM 194331	530033.286	6 109 965.593	D	4	SCIMS	FD
SSM 194337	530182.983	6 109 917.735	D	4	SCIMS	FD
SSM 194336	530286.779	6 109 929.638	D	4	SCIMS	FD
SSM 196113	530365.561	6 109 945.772	D	4	SCIMS	FD
SSM 177882	530574.423	6 109 887.353	D	4	SCIMS	FD
SSM 177852	530771.559	6 109 775.658	D	4	SCIMS	FD
PM 39883	531105.482	6 109 592.728	B	2	SCIMS	FD
PM 147932	530364.634	6 109 732.100	A	1	SCIMS	FD
PM 178042	530280	6 109 673	U	U	SCIMS	FD
SSM 207447	530427.2	6 109 610.7	U	U		
SSM 207449	530195.1	6 109 821.2	U	U	SURVEY	PLACED
SSM 207450	530583.6	6 109 758.7	U	U		
SSM 207451	530378.8	6 109 837.2	U	U		
SSM 207452	530516.8	6 109 807.2	U	U		
SSM 207453	530278.2	6 109 795.6	U	U		
SSM 207454	530001.4	6 109 857.1	U	U	CADASTRAL	
SSM 207455	530767.4	6 109 729.8	U	U		
SSM 207456	530367.1	6 109 746.2	U	U		
SSM 203100	530347.4	6 109 683.4	U	U		ALL

SCIMS SEARCH DATE- 12th FEB 2020. MGA ZONE 55 MGA DATUM GDA 94

COMBINED SCALE FACTOR OF 0.999572

HEIGHT SCHEDULE

MARK	AHD VALUE	CLASS	ORDER	HEIGHT DATUM VALIDATION	
PM 39883	239.350	LC	L3	SCIMS ADOPTED	FOUND
PM 147932	263.665	B	2	SCIMS ADOPTED	FOUND
SSM207447	0	LD	U		PLACED
SSM207449	248.84	LD	U		PLACED
SSM207450	0	LD	U		PLACED
SSM207451	253.71	LD	U		PLACED
SSM207452	0	LD	U		PLACED
SSM207453	253.295	LD	U		PLACED
SSM207454	235.568	LD	U		PLACED
SSM207455	0	LD	U		PLACED
SSM207456	261.49	LD	U		PLACED
SSM203100	263.683	LD	U		PLACED

HEIGHT DATUM AHD 71

SCIMS SEARCH DATE - 12th FEB, 2020.

HEIGHT DIFFERENCE SCHEDULE CLAUSE 69

FROM	TO	HEIGHT DIFFERENCE	METHOD
SS20875	SS207427	-2.60	DIFFERENTIAL LEVELLING
SS207427	SS194388	-4.10	DIFFERENTIAL LEVELLING
SS194388	SS20775	+6.70	DIFFERENTIAL LEVELLING
SS207427	SS207426	-9.255	DIFFERENTIAL LEVELLING
SS207426	SS207425	+0.54	DIFFERENTIAL LEVELLING
SS207425	SS207427	+8.715	DIFFERENTIAL LEVELLING
SS207425	SS194385	+3.285	DIFFERENTIAL LEVELLING
SS194385	SS194388	+1.33	DIFFERENTIAL LEVELLING
SS194388	SS207427	+4.10	DIFFERENTIAL LEVELLING
SS207427	SS207425	-8.715	DIFFERENTIAL LEVELLING

HEIGHT DATUM IS AHD 71

Surveyor <b>GLENDYN PAUL GROVES</b>	<b>PLAN OF SUBDIVISION OF LOT 700 DP1242827 AND LOT 42 DP 1183886</b>	LGA <b>WAGGA WAGGA</b>	Registered	<b>DP</b>
Date Of Survey <b>19th FEB, 2020</b>		Locality: <b>LLOYD</b>		
Surveyor's Reference <b>17317</b>		Subdivision No.		

Lengths are in metres. Reduction Ratio 1: 2000